

COLLABORATIVE COLLISION @FSU



COLLABORATIVE
CONNECTOR 

COLLABORATIVE
INCUBATOR 

COLLABORATIVE
ACCELERATOR 

Presentation Order

1. La Tonya Noël
2. Laurelin Haas
3. Paul W. Baures
4. Kassie Ernst
5. Lara Perez-Felkner
6. Brad Schmidt
7. Carter E. Bedford
8. Samantha Goldfarb
9. Laura Reid Marks
10. Kelley Robinson
11. Dawn Carr
12. Bahram Arjmandi
13. Mischa Steurer
14. Michael Core
15. Joseph Hellweg
16. Diana Brandon
17. Tisha Joseph Holmes
18. OCRA
19. Jeffrey Joyce
20. Svenja A. Wolf
21. Christopher Holmes
22. William Butler
23. Eren Erman Ozguven
24. Heather Flynn
25. Karen Oehme
26. Rebekah Sweat
27. John Mathias
28. Neil Charness
29. Chris Uejio
30. Amy Ai
31. Laurie Abbott
32. Jingjiao Guan
33. Myriam Rudaz
34. Angelina Sutin
35. Ann Perko
36. Sungmoon Jung
37. Danielle Morabito
38. Jessica Bahorski
39. John Sobanjo
40. Jonathan Adams
41. Tom Ledermann
42. Juan Ordonez
43. Bret Staudt Willet
44. Nasrin Alamdari
45. Julia Sheffler
46. Mimi Graham



La Tonya Noël

College of Social Work

Inoel@fsu.edu

<https://www.linkedin.com/in/la-tonya-noel-20739364/>

My Interest in Resilience

- Implementation and evaluation of trauma-trainings on school climate, safety, and academic outcome of children affected by trauma.
- Understanding cultural, social, and structural influences on detection, treatment engagement, and outcomes for trauma of minority populations in health care, schools, and rural settings
- The role of sociocultural factors in the etiology, diagnosis, and treatment of trauma in populations of color.

Research and Projects

- One of my projects is focused on evaluating the effectiveness of current school-based mental health (MH) interventions for children ages 5-11.
 - My team and I have published several systematic reviews with meta-analyses in our efforts to evaluate interventions and identify what interventions are useful in treating certain MH symptoms in school aged children.

Expertise/Interests

- Curriculum Design
- Intervention development
- Diversity, Equity, and Inclusion
- Trauma-Informed Care and training

How I Can Help You

- Trauma-informed care trainings
- Developing trauma modules in courses
- Exploring ways to be more inclusive in your intervention and curriculum development

How You Can Help Me

- Grant writing assistance
- Multimedia expertise
- Identifying funding sources
- Assistance with data collection planning and data analysis

- Another project is translating an already established trauma training for Title I teachers into a multimedia interactive online training and evaluating its initial impacts on teacher work functioning, work relationships with coworkers and students; and overall health.



Laurelin Haas

Sustainable Campus
lhaas@fsu.edu
sustainablecampus.fsu.edu

My Interest in Resilience

- Sustainable Campus is the Office of Sustainability at FSU (located in the Facilities Department)
- Four Areas of Interest: 1) Climate Action, 2) Waste Minimization, 3) Resource Stewardship, 4) Education for Sustainability
- Sustainability in the Strategic Plan: Goal VI, Objective V
- Defining sustainability: Human and ecological health, social justice, and secure livelihoods
- Sustainability & resilience go hand in hand: the ability to deal with change and continue to develop is essential to long-term sustainability

Research and Projects



The Green Fund provides small grants to FSU students, staff, and faculty pursuing sustainability projects that benefit the FSU community.



Campus as a Living Lab connects faculty with campus and community partners through for applied sustainability research projects.



The Green Office program helps FSU employees identify ways to make their workplace more sustainable and recognizes sustainability achievements.

Expertise/Interests

- Sustainability and environmental justice
- Campus-Community Partnerships
- Small grant funding
- Green Office program

How I Can Help You

- Highlight your work in SC communications
- Connect to local nonprofit and government organizations
- Connect to FSU Facilities
- Provide grant funding for sustainability innovations

How You Can Help Me

- Share details of your work for STARS reporting
- Provide expertise in sustainability dialogues
- Join our network of sustainability faculty/researchers
- Allow me to help you!

All Research Profiles Available at:

research.fsu.edu/CollaborativeCollision

Up Next: Paul W. Baures



Paul W. Baures

Chemistry—Panama City

pbaures@fsu.edu

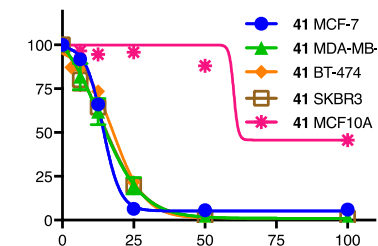
<https://orcid.org/0000-0003-3879-8428>

My Interest in Resilience

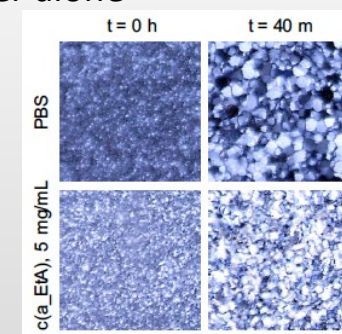
- Identifying new collaborations for existing or new research projects
- Create opportunities for Panama City undergraduates to gain research experience
- Help build infrastructure at Panama City for engaging in research projects

Research and Projects

- Currently investigating a fatty acid synthase inhibitor in a mouse model of breast cancer at Norris Cotton Cancer Center at Dartmouth Hitchcock



- Investigate the ice recrystallization inhibition of solutions of antifreeze proteins and small molecules relative to the growth of ice in PBS buffer alone



Expertise/Interests

- Medicinal chemistry
- Structure and function of antifreeze proteins/small molecules
- Investigating and implementing new teaching pedagogies in chemistry

How I Can Help You

- I can share small molecule libraries for screening against molecular targets
- Involving FSU-PC undergraduates in research can broaden the impact of grant goals

How You Can Help Me

- Screening or testing of compounds based on an imidazole-4,5-dicarboxylic acid scaffold
- Partner in development of a fatty acid synthase inhibitor for potential cancer applications



Kassie Ernst

College of Engineering, RIDER Center
kernst@fsu.edu,
orcid.org/0000-0002-4726-0331

My Interest in Resilience

- Identifying actionable information for urban resilience efforts that is science-informed, just, and effective
- Scaling-up science-informed resilience efforts beyond single case studies
- Understanding barriers and constraints to creating actionable climate change information that is both useful and used by decision-makers
- Connecting decision-makers and scientists in useful partnerships and researching the effectiveness/outcomes of these partnerships

Research and Projects



- FAMU-FSU COE Grand Challenges Scholars Program Faculty Director
- New Gulf Scholars Program Director
- New Engineering Living and Learning Community Director

Relevant Recent Publications:

- 2020. Applying the Knowledge Product Evaluation (KnoPE) Framework to two urban resilience cases in the United States. *Environmental Science & Policy*, 107, 7-22
- 2019. Identifying climate service production constraints to adaptation decision-making in Sweden. *Environmental Science & Policy*
- 2019. Towards urban water sustainability: Analyzing management transitions in Miami, Las Vegas, and Los Angeles. *Global Environmental Change*, 58, 101967

Expertise/Interests

- Urban Resilience
- Climate change decision-making
- Energy-Water Nexus
- Actionable information

How I Can Help You

- Boundary runner (link between science and decision-makers)
- Connection to Gulf of Mexico Organizations
- Co-production
- Synthesis
- Outreach/Education

How You Can Help Me

- Action-oriented collaborations
- Connecting on innovative, scalable projects
- Knowledge product research support
- Resilience knowledge product case studies

All Research Profiles Available at:

research.fsu.edu/CollaborativeCollision

Up Next: Lara Perez-Felkner



Lara Perez-Felkner

Associate Professor of Higher Education

lperezfelkner@fsu.edu

<https://orcid.org/0000-0002-3451-8524>

My Interest in Resilience

Looking for funding/collaboration:

- Inequality in H.S. & College Students' Pathways Socioeconomic, Educational, and Health Outcomes
- Specifically: (1) Food, Housing, and Other Basic Needs Insecurity and (2) Mental Health, including Stress, Anxiety, Depression

Gender and Racial/Ethnic Disparities in STEM Postsecondary Experiences, Outcomes, and Careers for Students & Faculty

Research and Projects

[RESET – Research on Equity in Science, Engineering, and Technology](#) projects focus on how ability beliefs, active learning, mentoring and research opportunities, and supportive social contexts influence persistence toward STEM research careers, with a focus on broadening participation in science, engineering, and technology in higher education and postsecondary careers.

[HEPP – Higher Education Persistence Pathways](#) initiatives investigate the structures and supports which can foster postsecondary student success among underrepresented students, especially women, Black and Latino students, and low-income students who may also be the first-generation in their family to go to college. This research draws on sociological and life course frameworks to understand constraints and opportunities which can contribute to longer-term outcomes.

See also: <https://perezfelkner.com/>

Expertise/Interests

- Race-, class- and gender-based disparities in pathways to postsecondary education and careers
- Gender inequality in STEM
- Sociology of education, Human Development
- Experimental, survey, and mixed methods study design

How I Can Help You

- RCT experiments, mixed methods integration, and/or surveys
- Evaluation and educational research partnership on equity- and opportunity-expansion projects
- Collaborative interdisciplinary analysis & writing

How You Can Help Me

- Collaborate on research projects using experiments and surveys, and as a qualitative partner for mixed methods research
- Interdisciplinary partnerships around high school, community college, and community partner interventions

All Research Profiles Available at:

research.fsu.edu/CollaborativeCollision

Up Next: Brad Schmidt



Anxiety & Behavioral Health Clinic

Psychology Department

abhcfsu@psy.fsu.edu

0000-0003-4125-9601

My Interest in Resilience

- Identifying individual and community factors contributing to resilience in the face of psychosocial stressors
- Developing, evaluating, and disseminating accessible treatment options to individuals from vulnerable populations
- Connecting with other research teams at FSU interested in studying factors related to risk and resilience

Research and Projects

- Current lab projects include:
 - Experimental investigation of factors influencing the decision to use an artificial firearm in a virtual shooting simulator environment
 - Development and evaluation of a web-based anxiety sensitivity intervention for individuals with mild cognitive impairment and their caregivers
 - Development and evaluation of a novel web-based tonic immobility intervention for individuals with elevated posttraumatic stress symptoms
 - Development and evaluation of a novel web-based safety behavior elimination intervention for individuals with elevated posttraumatic stress symptoms

Expertise/Interests

- Prevention and treatment of anxiety and related disorders
- Investigation of biobehavioral parameters that affect the generation and maintenance of anxiety pathology
- Relationship between anxiety pathology and physical health

How I Can Help You

- Experience with basic and translational research
- Experience providing treatment for clinical populations
- Experience developing, testing, and disseminating web-based interventions

How You Can Help Me

- Building connections across fields and disciplines
- Identifying recruitment sources in the Tallahassee area and beyond
- Data collection and analysis



Carter E. Bedford

Psychology Department

bedford@psy.fsu.edu

0000-0002-7553-976X

My Interest in Resilience

- Identifying factors contributing to resilience in the face of psychosocial and traumatic stressors
- Developing, evaluating, and disseminating accessible treatment options to individuals from vulnerable populations
- Connecting with other researchers studying factors related to risk and resilience

Research and Projects

- Current research projects include:
 - Development and evaluation of a web-based anxiety sensitivity intervention for female sexual assault survivors
 - Development and evaluation of a novel web-based safety behavior elimination intervention for individuals with elevated posttraumatic stress symptoms
 - An experimental investigation of factors influencing the decision to use an artificial firearm in a virtual shooting simulator environment

Expertise/Interests

- Prevention and treatment of anxiety and trauma-related disorders
- Neurophysiological and psychophysiological data collection and analysis (e.g., EEG, heart rate variability)
- Development of web-based interventions

How I Can Help You

- Experience with basic and translational research
- Experience providing treatment for clinical populations
- Experience collecting and processing neurophysiological data

How You Can Help Me

- Building connections across fields and disciplines
- Identifying recruitment sources in the Tallahassee area and beyond
- Data collection and analysis





Samantha Goldfarb

Assistant Professor
Department of Behavioral Sciences and Social
Medicine
sgoldfarb@fsu.edu

My Interest in Resilience

- Identifying and building a collaborative research team centered on maternal health and associated maternal and perinatal outcomes related to substance use, disparities, and resilience.
- Translating research to practice by identifying evidence-based policies to promote optimal outcomes.
- Connecting with other individuals at FSU who are interested in the trauma and resiliency factors related to maternal substance use and associated outcomes, policy, and treatment.

Research and Projects



I serve as a lead evaluator for Florida’s Opioid Overdose Data to Action Grant and an investigator/analyst to evaluate AHCA’s Medicaid transition from fee-for-service to managed care.

Expertise/Interests

- Program Evaluation
- Policy Analysis
- Maternal and Child Health Concentration
- Interest in Maternal Substance Use

How I Can Help You

- Methodology and Data Analysis
- Grant writing
- Experience using large data sets, such as Medicaid and National Longitudinal Survey of Youth

How You Can Help Me

- Dedicated effort to writing grants and research papers related to maternal substance use and resilience
- Highly engaged, motivated writers and researchers



Becoming an expert in factors related to maternal health/substance use



Translating research to evidence-based policy and practice



Creating highly motivated teams that can move work forward



Laura Reid Marks

Educational Psychology and Learning Systems

Laura.ReidMarks@fsu.edu

www.drlaurareidmarks.com

My Interest in Resilience

- Identifying and building collaborative research teams that may lead to publication and external grant applications.
- Building a multi-disciplinary team to translate research into community impact.
- Examining resilience and the development of resilience in communities of color with a special interest in emerging adults.

Research and Projects

- *Applying Bystander Interventions to Racial Microaggressions in a College Student Population*
- *Marginalization Experiences and Healthcare Utilization in Undergraduate College Students*
- *The State of Anti-racism Education and Training in Counseling Psychology Doctoral Programs*
- *Examining Psychology of Working Theory Factors in Black and White Emerging Adult College Students*
- *The Discrimination And Risky Endeavors Study*

Expertise/Interests

- Racial Microaggressions and Racism
- Mental Health
- Health Behaviors (alcohol and sexual risk)
- Health Disparities

How I Can Help You

- Expertise on survey and cross-sectional research
- Qualitative data analyses
- Quantitative data analyses

How You Can Help Me

- Assist with study design and implementation
- Grant writing experience applying for large external grants



Kelley Robinson

Dept. of Interior Architecture & Design
kgrobinson@fsu.edu
[linkedin.com/in/kelley-robinson-8178a37b](https://www.linkedin.com/in/kelley-robinson-8178a37b)

My Interest in Resilience

- Assistant Professor in the Interior Architecture and Design Department who transitioned from interior design practice.
- My research focuses around the study of Covid-19's impact of the design of the domestic space and the effects of working remotely.
- Other areas of research interest include the study and mapping of ordinary structures, their evolution during other times of crisis in history, and the societal impact of the built environment, particularly in the early to mid-twentieth century.

Research and Projects

- Qualitative case study of the domestic space and the shifting use of rooms while working/learning at home during Covid-19
- Mixed methods study of emerging interior designers regarding mentorship and working remotely during the pandemic
- Robinson, K. (2020). How will our spaces change as we continue to practice social distancing? Retrieved from <https://www.interiorsandsources.com/article-details/articleid/22945/title/spaces-change-social-distancing>
- Robinson, K. G. (accepted). Timing to elsewhere postponed: A case study of coincidental inhabitation during construction and COVID-19. In *2021 Virtual Fall Symposium*. Presentation to be conducted at the meeting of Interior Design Educator's Council, Virtual

Expertise/Interests

- Documentation and examination of interior spaces, particularly residential (vernacular)
- Pivoting of occupants within households during the pandemic
- Studying the spaces of lower and middle-income populations and their stories of resilience

How I Can Help You

- Can conduct an existing conditions analysis/field measurements of interior spaces and develop new ideas for spaces through drawing floor plans, elevations, etc.
- Familiar with the history of the home and evolution of vernacular building types

How You Can Help Me

- Access to populations who may be experiencing learning/working challenges during the pandemic
- Access to populations facing adversity and equity issues within their home spheres and neighborhoods



Dawn Carr

Pepper Inst. on Aging & Public Policy/ Department of Sociology

dccarr@fsu.edu

ORCID: <https://orcid.org/0000-0003-1091-1759>
[linkedin.com/in/dawn-carr-41692b11](https://www.linkedin.com/in/dawn-carr-41692b11)

My Interest in Resilience

- Identifying ways to develop larger partnerships to address policy relevant research projects focused on resilience as a factor that influences long-term outcomes
- Working with teams interested in developing resilience intervention studies
- Connecting with others who have a range of orientations to resilience, and particularly learning how they define and evaluate it.

Research and Projects

Older Veterans

- The Impact of Military Service Exposures and Psychological Resilience on the Mental Health Trajectories of Older Male Veterans
- Early-life military exposures and functional impairment trajectories among older male veterans: The buffering effect of psychological resilience

Responses to Stressful Life Events

- Depressive symptoms and the buffering effect of resilience on widowhood by gender
- Multiple chronic conditions, resilience, and workforce transitions in later life: a socio-ecological model

Measurement of Resilience

- Do higher levels of resilience buffer the deleterious impact of chronic illness on disability in later life?

Resilience as a Health Resource

- Psychological resilience and health among older adults: a comparison of personal resources

Grant Submissions:

- Emotion regulation
- Racial disparities
- COVID exposures and outcomes
- Mechanisms of successful aging

Expertise/Interests

- Analysis of large, representative longitudinal datasets
- Expertise in the Health and Retirement Study
- Health and aging/life course studies
- Propensity score methods
- Team leadership and collaborations

How I Can Help You

- Survey design, and data analysis for longitudinal studies
- Development of resilience measures
- Participating in grant writing teams
- Identifying ways to make our research more translational

How You Can Help Me

- Learning about different areas of expertise on resilience at FSU
- Learning about factors that shape resilience over the life course
- Participation in clinical studies/interventions

All Research Profiles Available at:

research.fsu.edu/CollaborativeCollision

Up Next: Bahram Arjmandi



My Interest in Resilience

- Identifying and building collaborative research teams, and mentoring them through the grant funding and research study design processes.
- Connecting with individuals and agencies to discover new impacts of functional foods on disease that will positively impact the health of society.
- Connecting with other individuals at FSU who are interested in the social and economic impacts of nutritional interventions on the health of society as prevention and/or alternative to medicines.

Bahram Arjmandi, PhD, RD

Dept. Nutrition and Integrative Physiology

barjmandi@fsu.edu

Linkedin.com/in/Bahram-h-Arjmandi-phd-rd-b6532212

Research and Projects



I am a professor in the Dept. of Nutrition & Integrative Physiology & Director of the Center for Advancing Exercise and Nutrition Research on Aging (CAENRA).

Link to comprehensive publication list:

<https://pubmed.ncbi.nlm.nih.gov/?term=bahram+arjmandi>

Sample of publications:

Hooshmand S, Kern M, Metti D, Shamloufard P, Chai SC, Johnson SA, Payton ME, Arjmandi BH. The effect of two doses of dried plum on bone density and bone biomarkers in osteopenic postmenopausal women: a randomized, controlled trial. *Osteoporos Int* 2016, 27(7), 2271-2279.

Johnson, S et al; Effects of daily blueberry consumption on circulating biomarkers of oxidative stress, inflammation, and antioxidant defense in postmenopausal women with pre-and stage 1-hypertension: a randomized controlled trial; *Functional Foods*; 2017 Jan 25;8(1).

Expertise/Interests

- Role of functional foods in prevention and treatment of chronic diseases
- Bone metabolism
- Nutrition and aging
- Grant proposals and research funding

How I Can Help You

- Connection to grant funding agencies, both private and government
- Connection to local collaborative agencies
- Grant writing
- Connection to Research experience in nutrition, bioactive compounds, and nutraceuticals

How You Can Help Me

- Assist with team building
- Assist with survey-design and data analysis
- Collaborate to write letters of intent and proposals to funding agencies
- Allow me to help you!

All Research Profiles Available at:

research.fsu.edu/CollaborativeCollision

Up Next: Mischa Steurer



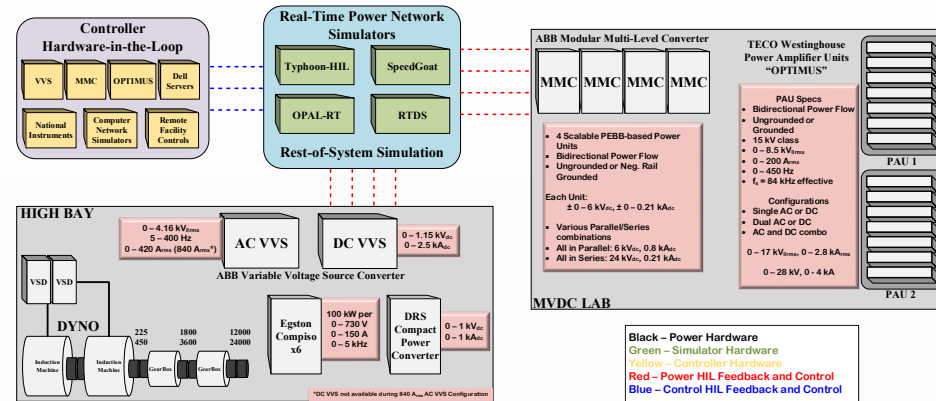
Mischa Steurer

CAPS

steuerer@caps.fsu.edu

My Interest in Resilience

- Resilience is a major factor in designing electric power systems
- Especially with our Navy work resiliency is even more important



CAPS Hardware in the Loop Facilities

Research and Projects

- Real time simulations of various electric power and energy systems
- Architectures of Power Electronic based Power Distribution Systems
- Ground fault location in ungrounded systems
- MV scale SiC converter development
- MV solid state circuit breakers

Expertise/Interests

- Electric Power & Energy Systems
- Hardware in the Loop Simulations
- Program Development
- Project Management

How I Can Help You

- Substantial expertise in electric power and energy systems
- Unique simulation and power testing capabilities
- Strong connection to US navy applied research

How You Can Help Me

- Exploring opportunities for collaborative research on innovative ways to improve resiliency in electric power and energy systems
- Make connections to new government and industry partners



All Research Profiles Available at:

research.fsu.edu/CollaborativeCollision

Up Next: Michael Core



Michael Core

FREAC

mcore@fsu.edu

<https://bit.ly/2WEtc6H>

My Interest in Resilience

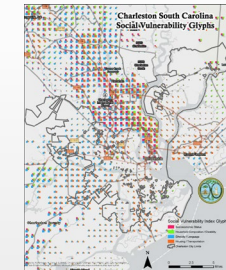
- Researching and analyzing relationships between community demographics, populations, and the built and natural environment.
- Planning and implementing projects designed to increase resilience during significant storm events.
- Developing web-based maps for local and state governments and search and rescue teams based on population estimates and social vulnerabilities.

Research and Projects

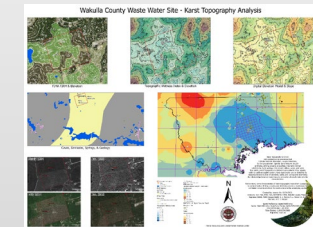
Florida Resources & Environmental Analysis Center

I am the Application Developer Designer for FREAC at FSU. We conduct research, model data, develop web-based and database solutions, and offer technical assistance. We specialize in demographics, population estimates, and environmental analysis.

- Social Vulnerability Glyph Maps



- Wakulla County Topography



Expertise/Interests

- Geographic Information Systems
- Remote Sensing
- Hurricanes
- Vegetation
- Application Development
- Maps
- Data Modeling

How I Can Help You

- GIS Analysis
- High Resolution Gridded Data
- Data Analysis
- Data Modeling and Projections
- Web-based Maps & Apps

How You Can Help Me

- FEMA Funding
- Emergency Management
- Research Projects
- Local Community Based Resilience Projects

All Research Profiles Available at:

research.fsu.edu/CollaborativeCollision

Up Next: Joseph Hellweg



Joseph Hellweg

Department of Religion

jhellweg@fsu.edu

<https://religion.fsu.edu/person/joseph-hellweg>

My Interest in Resilience

- Understanding African immigrant & refugee adaptations in the US to their new homes & collaborating with them to facilitate their resettlement
- Studying networks within West Africa & beyond that accomplish state functions beyond the state's purview, especially in education, health & security
- Using religious studies & cultural anthropology to assess forms of cultural practice thought to be non-religious: human rights, medicine, performance & politics

Research and Projects



Research on the N'ko alphabet of West Africa & its uses in healing

Expertise/Interests

- Cultural anthropology & anthropology of religion
- Kinship analysis, ritual studies & African politics
- Manding & French-language societies in West Africa
- Indigenous & Muslim rituals & performance in Africa
- Côte d'Ivoire, Guinea, Mali

How I Can Help You

- Ethnographic work with Africans & African immigrants
- Establish collaborations with Africanists in West & Central Africa, Europe & the US
- Work in Francophone Africa

How You Can Help Me

- Share expertise in demographic & environmental studies
- Combine quantitative & qualitative methods
- Draw comparisons across populations & research areas on shared themes



Documenting strategies that LGBTIQ West Africans use to pursue their liberation



Work with West African Hunters who heal & assure local security



West African efforts at eco-management

All Research Profiles Available at:

research.fsu.edu/CollaborativeCollision

Up Next: Diana Brandon



Diana Brandon

EPLS Department/ISLT Program

dbrandon2@fsu.edu

<https://www.linkedin.com/in/dlbrandon17>

My Interest in Resilience

- Professional Development in K-12 teachers and higher education
- Technologies that help/hinder resilience

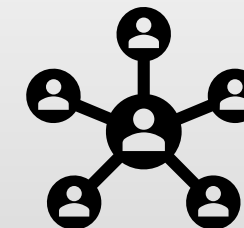
Research and Projects

Current Projects:

- Teacher Motivations for Technology Integration – current article in progress based on previous data collection



- Handbook chapter on digital-based assessment and innovative practices in education



Expertise/Interests

- K-12 Technology Integration
- Professional Development in K-12 and higher education

How I Can Help You

- Connections to out-of-state educators
- Practitioner perspectives
- Summer schedule

How You Can Help Me

- Collaborative partners for research
- Grant development/funding



Tisha Joseph Holmes

ttholmes@fsu.edu

<https://orcid.org/0000-0003-4754-9060>

My Interest in Resilience

- Social and institutional efforts to build resilience to environmental hazards in vulnerable, marginalized communities.
- Community based participatory in research, education and decision-making processes to address the present and potential impact of climate change risks and disasters.
- Interdisciplinary actions addressing climate resilience, disaster risk reduction, health equity and social welfare.

Research and Projects

- I evaluate local and regional actors' responses to cope, plan and recover from climate change hazards and disasters.
- I am examining displacement risks associated with sea level rise in low income communities of color in Miami-Dade, Duval and Pinellas Counties in Florida
- I was a co-investigator on a collaborative program to support and evaluate climate adaptation projects by county public health departments through the CDC's Building Resilience Against Climate Effects (BRACE) program in Florida.
- Recent projects / publications:
 - Holmes, T. T. J., Mathias, J., & McCreary, T. (accepted 2021). What's Problem with Disaster? Anthropology, Social Work and the Qualitative Slot. *Qualitative Social Work*
 - Butler, W., Holmes, T. T. J., & Lange, Z.(2020). Mandated Planning for Climate Change: Responding to the Peril of Flood Act for Sea Level Rise Adaptation in Florida. *Journal of American Planning Association*.
 - Holmes, T. T. J., & Butler, W. (2020). Implementing a mandate to plan for sea level rise: Top-down, bottom-up and middle out actions in the Tampa Bay Region. *Journal of Environmental Planning and Management*

Expertise/Interests

- Climate resilience planning
- Disaster resilience in low resource contexts
- Community outreach and engagement

How I Can Help You

- Participatory methods
- Qualitative methods
- Stakeholder outreach and engagement

How You Can Help Me

- Statistical methods
- Indicator development



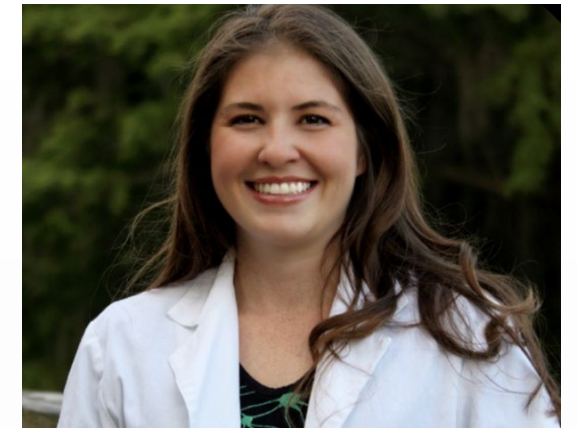
Krissy Capitano, RN, BSN

**Clinical Research Navigator
Office for Clinical Research
Advancement (OCRA)**

How OCRA Can Help

Services to FSU researchers conducting human subjects research:

- One-on-one consultations
- Pre-IRB submission of study design/development to help address potential regulatory/compliance concerns like the approach, interventions, use of regulated products, statistical methods, design issues, record-keeping, required reporting or recruiting/consenting subjects.
- Identify clinical collaborators and community research resources.
- Informational workshops, seminars and other training.
- Coming soon: 2,180 sf core clinical research support facility at Innovation Park providing personnel, phlebotomy/other services, and space to conduct research studies.
- Contact ocra@fsu.edu for one-on-one consultations.



Marissa Ciesla, Ph.D.

TMH/FSU Research Coordinator

- TMH and FSU have partnered up to facilitate research collaborations!
- Interested in collaborating with TMH? Contact ocra@fsu.edu
- Assistance in identifying TMH clinical collaborators, resources, participant recruitment, and navigating the TMH IRB process.

WHO CAN COLLABORATE?

- Faculty, Staff, Post-Doctoral Fellows & Medical Residents
- Graduate, Medical, & Undergraduate Students

Expertise/Interests

- Human Subjects Research
- Clinical Research & Trials
- Community Engagement
- Community Collaborators

TMH Clinical Areas Active in Research

- Cardiology
- Metabolics
- Neurology
- Oncology
- Internal Medicine
- Surgery

Active FSU/TMH Research Collaborations

- College of Medicine
- Internal Medicine & General Surgery Residencies
- College of Nursing
- College of Human Sciences
- College of Business

All Research Profiles Available at:

research.fsu.edu/CollaborativeCollision

Up Next: Jeffrey Joyce



Jeffrey Joyce

Div Research & Graduate Programs

Jeffrey.Joyce@med.fsu.edu

[linkedin.com/in/jeffrey-joyce-5252b62/](https://www.linkedin.com/in/jeffrey-joyce-5252b62/)

My Interest in Resilience

- Support Pilot Projects and Teams engaged in research in Rural Health and Resilience for the Panhandle Region
- Support development of infrastructure and resources for health outcomes research in non-traditional research environments
- Mission of the FSU CTSA: Translational science at FSU engages communities in developing and testing biobehavioral interventions across the translational spectrum to address sociocultural determinants of health

Research and Projects

- FSU CTSA PI, *“Together: Transforming and Translating Discovery to improve Health”*
- National Center for Advancing Translational Sciences under awards KL2TR001429 and UL1TR001427



K Scholar Program to develop pipeline of translational science researchers



BERD: Bioinformatics, Epidemiology, Research Design



NCRT: Network for Clinical Research and Training



Community Engagement: Our Community Our Health

- <https://www.research.fsu.edu/research-fsu/ctsa/>

Expertise/Interests

- Supporting Cross College and Cross Institutional Teams
- Create paradigm-changing platforms to facilitate collaborative expertise within the broad health care communities to identify, understand and design solutions to improve research about health and care

How I Can Help You

- Connection to resources to support basic through translational science
- Connecting to a network of translational scientists at 50 CTSA Hubs
- Building new teams through UF-FSU CTSA pilots

How You Can Help Me

- Provide me with information about challenges in implementing research programs
- Learn about success stories in implementing translational research in non-institutional environments

All Research Profiles Available at:

research.fsu.edu/CollaborativeCollision

Up Next: Svenja A. Wolf



Dr. Svenja A. Wolf

Sport Psychology Program (EPLS)
swolf2@fsu.edu

<https://education.fsu.edu/faculty-and-staff/dr-svenja-wolf>

My Interest in Resilience

Especially in high-pressure performance context (e.g., sport), challenges and setbacks are inevitable.

- Which properties do individuals and especially **teams** have to have in order to **bounce back** most effectively?
- Generally, how do **social factors increase or reduce** a person's resilience?
- Which **emotions** characterize resilience?
- To what extent can we take analogies and knowledge from natural science, economics, etc. and apply this to **human resilience**?

Research and Projects

The LEGO Laboratory on Emotions in Groups and Organizations



- The consequences of collective emotions for sport teams' **social integration**
- The links between collective emotions and **teams' coordination**
- Emotional convergence as a type of **conformity**
- Social indispensability as a cause of **choking under pressure**
- The social psychology of **goalkeepers**



Expertise/Interests

Broadly:

- **(Sport) Psychology**
- **Emotions**
- **Group Dynamics**

Specifically:

- Collective emotions
- Motivating and pressure-inducing effects of social indispensability

How I Can Help You

- Experience with field-based research in performance domains
- Knowledge on emotions and group dynamics theories, literature, and methods
- Leader of a motivated lab of (under)graduate students
- International network

How You Can Help Me

- Expand to performance domains outside of sport
- Translate and apply my research and findings to the (FSU, Tallahassee, FL) community
- Provide new (theoretical and methodological) perspectives on my research foci

All Research Profiles Available at:

research.fsu.edu/CollaborativeCollision

Up Next: Christopher Holmes



Christopher Holmes

Earth, Ocean and Atmospheric Science
cdholmes@fsu.edu
<https://acgc.eoas.fsu.edu>

My Interest in Resilience

- How can we maximize benefits of prescribed fires (wildfire risk reduction, habitat management) while minimizing its harms (air quality impacts, visibility hazards)?
- Impacts of agricultural fires on human health
- How much climate warming is caused by methane emissions?

Research and Projects

- Air quality and health impacts of biomass burning
- Improving air quality forecasts with fire forecasts
- Atmosphere-biosphere interactions: Ozone deposition and impacts on the biosphere
- What controls global atmospheric oxidant levels?

Expertise/Interests

- Air quality & air pollutants
- Greenhouse gases
- Atmospheric chemistry and transport modeling
- Satellite & surface data fusion & analysis

How I Can Help You

- Atmospheric datasets and models

How You Can Help Me

- Environmental economics (fires, conservation, natural hazards)



All Research Profiles Available at:

research.fsu.edu/CollaborativeCollision

Up Next: William Butler



William Butler

Urban and Regional Planning, FSU

wbutler@fsu.edu

My Interest in Resilience

- Social ecological resilience thinking as applied to climate change impacts and disturbances
- Motivators and barriers to local climate change adaptation planning to foster coastal resilience to SLR
- Intersections of climate justice and climate adaptation with an eye to adaptation and resilience with equity
- Assessing the drivers of climate gentrification and displacement of low-income populations (particularly communities of color) to foster equitable resilience

Research and Projects

- Climate justice and gentrification: Mapping, policy analysis, and interview assessment of Affordable Housing and SLR adaptation to address climate gentrification pressures in Florida
- Assessment of Peril of Flood Act mandate to plan for SLR in Florida to determine the extent to which coastal communities are planning for resilience to climate change impacts
- Survey of planners and managers on where they stand on SLR planning for resilience
- Regional Resilience and Climate Collaboratives—examining how and the extent to which regional bodies make a difference in enhancing resilience of Florida municipalities

Expertise/Interests

- Social-ecological resilience
- Collaborative Environmental Management
- Coastal Community Resilience
- Climate Change Adaptation
- Climate Justice
- Climate Gentrification

How I Can Help You

- Qualitative research design, data collection, and analysis
- Community engagement and outreach
- Connecting science to application and policy

How You Can Help Me

- Participating in mixed-methods ID project
- Quantitative data analysis
- Physical and natural science data sets and information relevant to policy and planning
- Mapping of climate and displacement risks



Eren Erman Ozguven

Civil & Environmental Eng./RIDER Center
eozguven@eng.famu.fsu.edu
Rider.engineer

My Interest in Resilience

- I am interested in the resilience of our communities, especially those that are underserved and vulnerable, against disasters such as hurricanes and pandemics.
- Given that the extreme weather events are affecting our communities disproportionately, there is a need to develop approaches that help bridge the gap in achieving resilience with a focus on issues related to infrastructure, environment, governments, and people.
- I am open to collaborations with faculty from other disciplines in the context of infrastructure and community resilience.

Research and Projects

I am involved in several projects focusing on the disaster resilience. Examples include:

NSF CoPe RCN: Resilient Rural Infrastructure

The RCN for Resilient Rural Infrastructure will explore and achieve adaptive capacity and resilience for Gulf coastal communities, which has the potential to extend to infrastructure resilience of other rural communities in the United States.

NSF SCC-CIVIC-FA Track B: Rural Resiliency Hubs: An Integrated, Community-Centered Approach to Addressing the Resiliency Divide through Rural Public Libraries

This project will explore the interactions between community actors, population needs, environment, information, and infrastructure foster disaster resilience in rural communities and how disaster resilience can be achieved by using rural libraries as resiliency hubs for natural disaster response.

NSF Excellence in Research: Integrated Hazard and Traffic Modeling for Massive Evacuation in Florida Under Uncertainty of Hurricane Track

This project integrates coastal hazard modeling with comprehensive evacuation modeling while considering the uncertainty of hurricane tracks.

Expertise/Interests

- Emergency Evacuations
- Infrastructure Resilience
- Resilient Communities
- Traffic Engineering
- Accessibility

How I Can Help You

- Traffic Simulation
- Network Modeling
- Evacuations
- Sheltering
- Infrastructure Resilience

How You Can Help Me

- Community Impact
- Public Policy and Planning
- Psychological and Sociological Impacts
- Human Factors



Heather Flynn, PhD

Professor and Chair, Behavioral Sciences and Social Medicine, College of Medicine

My Interest in Resilience

- Working with communities, agencies and organizations to integrate mental health and substance use treatment
- Health services and treatment research aimed at improving perinatal and maternal behavioral health outcomes
- Behavioral Health integration in primary care, including obstetrics and pediatrics
- Behavioral health data integration

Research and Projects

- *Implementation of Pediatric Behavioral Health Integration*
- *Maternal Behavioral Health Integration in obstetrics*
- *Psychological and Medical Factors in Pain and Opioid Use in Orthopedic Practice*

Expertise/Interests

- Mental Health Engagement and Treatment
- Perinatal Behavioral Health
- Community Partnerships

How I Can Help You

- Liaison with mental health entities in the community and nationally
- Mental health related research questions and projects
- Maternal-Child related research
- Training in psychiatric treatment

How You Can Help Me

- Linkage with biostatistics faculty
- Connection with obstetrics practices



Karen Oehme

Director, Institute for Family Violence Studies

koehme@fsu.edu

<https://orcid.org/0000-0002-8285-1233>

Expertise/Interests

- Program Development
- Online learning and Professional Development
- Collaborative, interdisciplinary team management
- Research teams

My Interest in Resilience

- I am the director of the FSU Student Resilience Project, and the Chair of the Academic Resilience Consortium.
- COVID-19 has had a disruptive negative impact on students, and they need our help more than ever. Women, people of color, and those in the LGBTQ+ community at FSU tend to report more adverse childhood experiences and less resilience than their male, white and heterosexual peers. I want to help all students thrive at FSU.
- Online learning through CAPD (we build curricula): <https://learningforlife.fsu.edu/professional-certification-trauma-and-resilience/>

How I Can Help You

- If you are interested in academic resilience, join ARC to collaborate
- I can help disseminate your projects
- I'd be happy to give you advice on creating professional development courses.

How You Can Help Me

- **FSU is hosting an international Academic Resilience Conference in March, 2022. Attend and participate. Submit a proposal to present.**

Research and Projects

- The FSU Student Resilience Project (Strong.FSU.edu)
- The Academic Resilience Consortium (ARC) (AcademicResilience.org)
- Research Team publications:
 - Ray, E., Perko, A., Oehme, K., Arpan, L., Clark, J., Bradley, L. (accepted, 2021). Freshmen Anxiety and COVID-19: Practical Implications from an Online Intervention for Supporting Students Affected by Health Inequities. *Journal of American College Health*.
 - Ray, E. C., Arpan, L., Oehme, K., Perko, A., & Clark, J. (2020). Examining the implementation of a universal approach to student resilience. *Journal of Higher Education Management, 35*(3), 4-15.
 - Perko, A., Oehme, K., Ray, E.C., Arpan, L., Clark, J. (2020). The Vulnerability Gap: Group Differences in Childhood Trauma on a Florida College Campus, *Florida Journal of Education Research, 58*(6), 1-19.
 - Oehme, K., Perko, A., Altemus, M., Ray, E. C., Arpan, L., & Clark, J. (2020). Lessons from a Student Resilience Project. *Journal of College Student Development, 61*(3), 396-399.
 - Ray, E. C., Arpan, L., Oehme, K., Perko, A., & Clark, J. (2019). Helping students cope with adversity: the influence of a web-based intervention on students' self-efficacy and intentions to use wellness-related resources. *Journal of American College Health, 1*-8.
 - Ray, E. C., Arpan, L., Oehme, K., Perko, A., & Clark, J. (2019). Testing Restorative Narratives in a College Student Resilience Project. *Innovative Higher Education, 44*(4), 267-282.
 - Oehme, K., Perko, A., Clark, J., Ray, E. C., Arpan, L., & Bradley, L. (2019). A Trauma-Informed Approach to Building College Students' Resilience. *Journal of Evidence-Informed Social Work, 16*(1), 93-107



Rebekah Sweat

Industrial and Manufacturing Engineering

r.sweat@eng.famu.fsu.edu

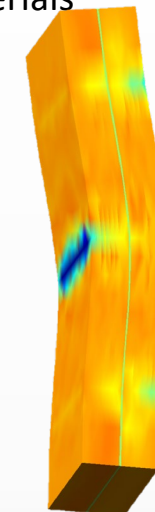
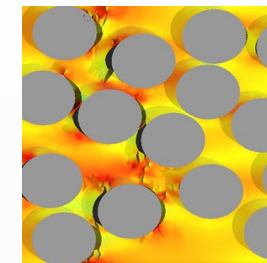
[linkedin.com/in/rebekah-sweat-downes/](https://www.linkedin.com/in/rebekah-sweat-downes/)

My Interest in Resilience

- Modern design of composite structures to withstand extreme environments
- Prediction of failure modes in building materials
- Faster application of novel materials for toleration of environmental events
- Manufacturing methods for quick implementation

Research and Projects

- Aerospace and structural composites
- High-temperature materials
- Fracture analysis



Expertise/Interests

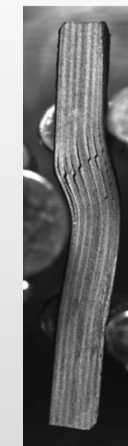
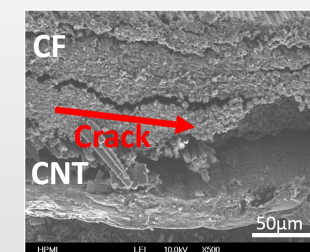
- Micromechanics
- Composites
- Nanomaterials
- Digital Twin Simulations

How I Can Help You

- Virtual structure testing in extreme environments
- Knowledge of composite structures in modern manufacturing
- Micromechanics of materials
- Custom material testing

How You Can Help Me

- Application of materials with broader impacts in resilience
- Interdisciplinary approaches
- Area knowledge from experts in disaster management





John Mathias

College of Social Work

jmathias@fsu.edu

<https://orcid.org/0000-0001-8372-0078>

My Interest in Resilience

- Community resilience to natural disasters and pandemics
- Disparities in resilience and the perpetuation of social inequity in the aftermath of disasters.
- Nonprofits/NGOs/Third Sector and roles in increasing/inhibiting resilience of low-resource, marginalized, or oppressed populations
- How disaster and resilience are differently realized in various cultural contexts, particularly how they are marked and delimited in time and space
- Florida and India

Research and Projects

- After Aid: Resilience, Ordinary Social Services, and the Disaster-Chronic Inequality Shuffle in America
- Co-occurring Hurricanes and Pandemics, Sheltering, and Social Vulnerability in Florida (PI'd by Arda Vanli, Engineering)
- Libraries as Community Resilience Hubs in Under-Resourced Rural Areas (PI'd by Marcia Mardis, Communications)
- Special Needs Populations and Resilience to Michael and COVID-19 in Gadsden and Jackson Counties (PI'd by Eren Ozguven, Engineering)

Expertise/Interests

- Cultural anthropologist
- Ethnography and qualitative methods
- Social vulnerability/resilience to disasters
- Environmental justice and environmental health equity
- Non-profit sector and civil society

How I Can Help You

- Understanding the human side of disasters
- As anthropologist: Cultural difference and social complexity
- As social work researcher: Community-engaged and participatory methods

How You Can Help Me

- Understanding the physical or infrastructural side of resilience
- Understanding the medical and epidemiological sides of resilience
- Understanding the policy and planning sides of resilience



Neil Charness

Psychology/Institute for Successful Longevity

charness@psy.fsu.edu

<http://orcid.org/0000-0002-1002-3439>

My Interest in Resilience

- Finding ways to improve resilience in people as they age.
- Predictive models for guiding technology interventions
- Remote monitoring of health and well-being
- Technology interventions for reducing social isolation and loneliness

Research and Projects

- APPT (Adherence Promotion with Person-centered Technology)
 - Interdisciplinary NIA R01
- ENHANCE (Enhancing Neurocognitive Health, Abilities, Networks, and Community Engagement)
 - Interdisciplinary NIDILRR RERC
- ASAP (Accessibility and Safety for the Aging Population)
 - Interdisciplinary University Transportation Center
- Institute for Successful Longevity team grant proposals

Expertise/Interests

- Human factors methods
- Cognitive aging intervention (RCT) studies
- Age and technology use
- Experimental methods for investigating expertise

How I Can Help You

- Link you to researchers interested in aging and resilience

How You Can Help Me

- Link me to researchers interested in aging and resilience



Chris Uejio

Geography/Public Health

cuejio@fsu.edu

My Interest in Resilience

- Public Health Resilience
- Community Resilience
- Critical Infrastructure
- Nature based solutions

Research and Projects

- Strategies to cope with and mitigate hot and humid exposures
- Extreme heat, air conditioning, and energy poverty
- Hurricanes and maternal and child health
- Evaluating the health benefits of blue/green infrastructure
- Florida Building Resilience Against Climate Effects
 - Evaluation hurricane shelter
 - Evaluation preparedness workshops
 - Evaluation of extreme heat communication

Expertise/Interests

- Environmental Health
- Infectious Diseases
- Climate Variability & Change
- Indoor Environments
- Extreme Heat
- Mosquito borne Diseases
- Water Quality
- Health Disparities
- Decision Support Systems
- Health Interventions
- Big Data

How I Can Help You

- Network of partners interested in climate & health resilience
- Statistical analysis (spatial, frequentist, Bayesian)
- Accessing and creating health, weather, and environmental datasets

How You Can Help Me

- Occupational health (outdoor workers)
- Biomarkers
- Health cohorts
- Medicaid/Medicare data



Amy L Ai

A Fellow of Trauma Psychology, APA
College of Social Work, aai@fsu.edu
orcid.org/0000-0003-1653-0164

My Interest in Resilience

- Exploring individual strength and protective factors to enhance pandemic/disaster-related resilient outcomes
- The long-term survival as a resilient outcome of cardiac and other chronic conditions with multidisciplinary predictors
- Understanding the complicated pathways (mechanism) to both positive and negative outcomes following individual and collective trauma from interdisciplinary perspectives
- Revealing psychosocial risk for post-disaster recovery and rebuilding in underserved minority populations
- Examining various types of wellbeing and traumatic impacts

Research and Projects



- Principal Investigator (PI) — *The Role of Psychological Strength Factors on Long-term Survival of Older Adults with Advanced Heart Diseases & Gender Differences (20-years follow-up)* funded by the National Institute on Health.
- Co-PI — *Traumatization and Resilience Following Hurricanes Maria and Michael in Florida: Positive Media and Posttraumatic Growth*
- Consultant — *Psychosocial Impact of Lock down during the Covid-19 pandemic* (an international survey, PI: Anna Kopic, PhD, Univ. of Rome, Italy)

Expertise/Interests

- Psychosocial Impacts of Pandemics and Disasters
- Complexity in Trauma and Resilient Outcomes
- Diseases’ Mental Health Comorbidities
- Existential Crisis/Spirituality

How I Can Help You

- Interdisciplinary research on disease and pandemic impacts
- Clinical studies on patients’ long-term resilience/survival
- Risk factors in physical and mental health
- Influences of human strength factors on resilience
- Complex research design

How You Can Help Me

- Biomarkers in diseases
- Biostatistics
- Statistical modeling
- Collaboration on publications and disseminations
- Creative projects with multidisciplinary expertise such as your basic sciences

Recent Proposals/Publications:

- Ai, L. A., Renay, A. A., & Paloutzian, R. F. (2021). Perceived spiritual support (short-form) counteracts the traumatic impact of extreme disasters: Exploration of moderators. *Psychological Trauma: Theory, Research, Practice, and Policy*
- Ai, L. A., Petscher, Y., Pappas, A. (2021). Childhood mistreatment, PTSD, and substance use in Latinx: The role of discrimination in an omitted-variable bias. *International Journal of Behavioral Medicine, 28*(), 602-615..
- Ai, A. L., Kabbie, M. (2014). Body affects mind? Preoperative biological predictors for postoperative psychiatric symptoms in cardiac patients. *Journal of Behavioral Medicine, 37*(1), 127-134.

All Research Profiles Available at:

research.fsu.edu/CollaborativeCollision

Up Next: Laurie Abbott





Laurie Abbott

PhD, RN, PHNA-BC
FSU College of Nursing

My Interest in Resilience

- Exploring factors related to chronic disease including cardiovascular disease, diabetes, and heart failure
- Developing and implementing interventions to prevent and reduce disease risk and chronic disease exacerbation and associated hospitalizations
- Collaborating with others to advance health equity among underserved populations
- Studying public health topics aimed toward enhancing optimal well-being

Research and Projects

- **Current**
 - Co-investigator of a study to develop and test a problem-solving intervention for rural heart failure dyads
 - Co-investigator of a study to investigate outcomes related to pesticide exposure among rural children
- **Completed**
 - Cluster randomized trial of a cardiovascular health promotion intervention in a rural setting
 - Cluster randomized trial of a diabetes health promotion intervention in a rural setting
 - Descriptive study to explore stress, social support , and resilience in rural women.

Expertise/Interests

- Rural Health
- Health Promotion
- Disease Risk Reduction
- Public Health
- Community Interventions

How I Can Help You

- Experienced registered nurse with board-certification as an Advanced Public Health Nurse
- Experience with developing and delivering health interventions in community settings
- Collaborate on projects and grants intended to promote health and reduce disease

How You Can Help Me

- Collaborate with individuals and inter-disciplinary teams on external grants, projects, and manuscripts
- Brainstorm solutions to public health problems that can be transformed into grant-fundable research projects.



Jingjiao Guan

Chemical and Biomedical Engineering

jguan@fsu.edu

https://scholar.google.com/citations?user=_8QHCAgAAAAJ&hl=en

My Interest in Resilience

- Finding collaborators to study intracellular trafficking following phagocytosis in dendritic cells for vaccine development

Research and Projects

Expertise/Interests

- We recently developed a new technique allowing for delivery of tracing/labelling molecules into phagosomes of macrophages to study intercellular trafficking

How I Can Help You

- Provide our unique delivery technique to study phagocytosis

How You Can Help Me

- Provide expertise in dendritic cells and vaccine development



Myriam Rudaz

Human Development and Family Science

mrudaz@fsu.edu

ORCID: 0000-0003-0550-3558

My Interest in Resilience

- Investigating the impact of mindfulness and compassion practices on positive health outcomes to help people become more resilient.
- Development, implementation and evaluation of innovative mindfulness- and compassion-based programs to foster resilience.
- Examining genuine happiness as a way of resilient being.

Research and Projects

- Development, implementation, and evaluation of an in-person, genuine happiness training
- Evaluation of an online live compassion for couples program
- Evaluation of an online live compassion for children and caregivers program

Expertise/Interests

- Mindfulness
- Self-Compassion
- Genuine Happiness
- Mental Health and Well-Being
- Mind-Body Trainings

How I Can Help You

- Evaluation of mind-body trainings
- Development and validation of mindfulness and compassion scales

How You Can Help Me

- Support with qualitative evaluation of trainings
- Collaborate interdisciplinary



Angelina Sutin, PhD

Behavioral Sciences and Social Medicine

asutin@fsu.edu

https://scholar.google.com/citations?user=oQjUa_4AAAAJ&hl=en

My Interest in Resilience

- Identifying psychological and social factors that increase resilience
- Identifying how to bolster psychological strengths to help increase resilience
- How structural and environmental factors shape the development of psychological and social resilience across the lifespan

Research and Projects

- R01AG074573: Purpose in life: Mechanisms to support healthier cognitive aging and reduce risk of Alzheimer's disease
- R56AG064952: The interpersonal core of conscientiousness: Mechanisms and partner effects that promote healthier cognitive aging and reduce risk of Alzheimer's
- R01AG060164: Midlife cognitive aging in Hispanic/Latinos: Predictors and mechanisms of decline
 - Supplement: Psychosocial Stress and Adaptation to the COVID-19 Pandemic in the Latinx Population
- R01AG053297: Prenatal and early life antecedents of personality: An intergenerational lifespan approach

Expertise/Interests

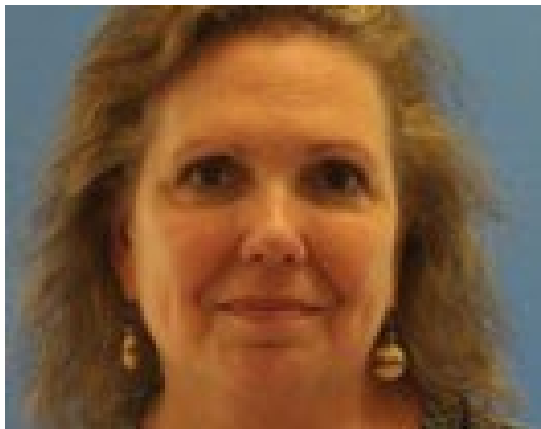
- Cognitive aging
- Psychological strengths, including personality and purpose in life
- Vulnerabilities for social health, including perceived experiences with discrimination and loneliness
- Lifespan models of health

How I Can Help You

- Expertise in psychological resilience and vulnerability
- Expertise in longitudinal methodology and analysis

How You Can Help Me

- Expertise in environmental and/or structural resilience and vulnerability
- Interdisciplinary teams
- Recruitment of underrepresented populations in research



Ann Perko

Director of Research Dissemination
Institute for Family Violence Studies
aperko@fsu.edu

<https://orcid.org/0000-0002-7287-9267>

My Interest in Resilience

- I am a co-founder of the FSU Student Resilience Project.
- COVID-19 has had a disruptive negative impact on students, and they need support more than ever.
- Women, people of color, and LGBTQ+ students at FSU tend to report more adverse childhood experiences and less resilience than their male, white and heterosexual peers. I want to help all students thrive at FSU.
- IFVS online resilience curricula is offered through CAPD: <https://learningforlife.fsu.edu/professional-certification-trauma-and-resilience/>

Research and Projects

- The FSU Student Resilience Project: Strong.FSU.edu
- Child Welfare Workforce Trauma and Resilience Training
- Professional Certifications:
 - Trauma & Resilience Levels 1 & 2
 - Human Trafficking Prevention & Intervention
 - College Student Wellbeing, Trauma, & Resilience
- Research Team publications:
 - Ray, E., Perko, A., Oehme, K., Arpan, L., Clark, J., Bradley, L. (2021). Freshmen Anxiety and COVID-19: Practical Implications from an Online Intervention for Supporting Students Affected by Health Inequities. *Journal of American College Health*. <https://doi.org/10.1080/07448481.2021.1965610>
 - Ray, E. C., Arpan, L., Oehme, K., Perko, A., & Clark, J. (2020). Examining the implementation of a universal approach to student resilience. *Journal of Higher Education Management*, 35(3), 4-15.
 - Perko, A., Oehme, K., Ray, E.C., Arpan, L., Clark, J. (2020). The Vulnerability Gap: Group Differences in Childhood Trauma on a Florida College Campus, *Florida Journal of Education Research*, 58(6), 1-19.
 - Oehme, K., Perko, A., Altemus, M., Ray, E. C., Arpan, L., & Clark, J. (2020). Lessons from a Student Resilience Project. *Journal of College Student Development*, 61(3), 396-399.
 - Ray, E. C., Arpan, L., Oehme, K., Perko, A., & Clark, J. (2019). Helping students cope with adversity: the influence of a web-based intervention on students' self-efficacy and intentions to use wellness-related resources. *Journal of American College Health*, 1-8.
 - Ray, E. C., Arpan, L., Oehme, K., Perko, A., & Clark, J. (2019). Testing Restorative Narratives in a College Student Resilience Project. *Innovative Higher Education*, 44(4), 267-282.

Expertise/Interests

- Program Development
- Online Learning and Professional Development
- Domestic Violence
- Research teams
- Interdisciplinary teams

How I Can Help You

- Can discuss my experience with building professional development courses.
- Can discuss project building and research experience with Student Resilience Project.

How You Can Help Me

- Promote the Student Resilience Project in your departments and classrooms.
- Attend and participate in FSU's International Academic Resilience Conference in March 2022.

All Research Profiles Available at:

research.fsu.edu/CollaborativeCollision

Up Next: Sungmoon Jung



Sungmoon Jung

Civil Engineering / RIDER
sjung@eng.famu.fsu.edu
<http://wiselab.info>

My Interest in Resilience

- Research focus: to improve resilience of buildings (and other structures) against hurricane winds
- To seek collaborators in writing grant proposals

Research and Projects

Selected Grants

- Jung, S., & Liu, X. (Aug 2019 – Jul 2022), Effect of Heterogeneous Terrain on Wind Loads on Buildings, NSF, \$451,993
- Jung, S. (May 2013 – Apr 2018), CAREER: Offshore Wind Turbines Subjected to Hurricanes: Simulation of Wind-Wave-Structure Interaction and Aerodynamic Load Reduction, NSF, \$400,000

Selected Journal Papers

- Amirinia, G., & Jung, S. (2017), Along-wind response of high-rise buildings subjected to hurricane boundary layer winds, ASCE Journal of Structural Engineering, 143, 04017087
- Jung, S., & Masters, F. J. (2013), Characterization of open and suburban boundary layer wind turbulence in 2008 Hurricane Ike, Wind and Structures, 17, 135-162

Expertise/Interests

- Structural engineering
- Wind loading
- Impact loading
- Wind energy

How I Can Help You

- Identify engineering challenges in resilience of buildings and other structures
- Serve in graduate student committee
- Write grant proposals together

How You Can Help Me

- Invite in grant opportunities
- Send students who wish to work in an engineering project



Danielle Morabito

Clinical Psychology

Morabito@psy.fsu.edu

<https://orcid.org/0000-0001-8363-3249>

My Interest in Resilience

- Identifying individual and community factors that contribute to resilience when faced with psychological trauma.
- Identifying and intervening on factors that influence threat responding and subsequent mental health.
- Developing preventative interventions to foster resilience in vulnerable populations.
- Increasing access to stepped and interdisciplinary mental health care.

Research and Projects

My research is focused on posttraumatic stress disorder (PTSD) and other psychosocial consequences of trauma.



Recent projects include:

- Examination of individual differences in threat responding
- Risk factors for COVID-19 pandemic related impairment
- Examination of how childhood trauma and unpredictability impact mental health outcomes
- Development and evaluation of brief web-based interventions
 - Tonic Immobility Psychoeducation (TIP)
 - Building Stronger Allies (BSA)

Expertise/Interests

- Transdiagnostic risk factors
- Anxiety and trauma related disorders
- Threat responding
- Psychosocial functioning
- Web-based interventions

How I Can Help You

- Experience in both experimental and treatment research
- Clinical training
- Database management
- Designing and implementing web-based interventions

How You Can Help Me

- Provide interdisciplinary perspectives
- Assist in building community connections
- Data collection and analysis



Jessica Bahorski, PhD, APRN

College of Nursing, Assistant Professor

jbahorski@fsu.edu

orcid.org/0000-0002-2989-0188

My Interest in Resilience

- I am a pediatric nurse practitioner with clinical experience in many settings (acute care, primary care, school health, etc.).
- Seeking others who study the first 1,000 days (from conception to age 2 years).
 - Helping children get the best start
 - Supporting families during this time
 - Addressing “4th trimester” challenges & needs
- Identification of interdisciplinary teams and incorporation of nursing into these teams.
- Translating research into practice.



Research and Projects

Learning Early Infant Feeding Cues

- **Funded by the 2019 Collaborative Collision: Children & Families Seed Fund**
- Testing an individualized responsive feeding intervention within home visiting programs that service high risk families
- Collaboration with the Early Head Start and Healthy Start programs in Gadsden & Jackson Counties



Expertise/Interests

- Maternal/Child Health
- Pediatric Obesity Prevention
- Infant Feeding Practices



How I Can Help You

- Knowledge of infant and childhood growth & development (including nutrition)
- Nursing skills & expertise
- Descriptive research
- Survey development
- Community relationships

How You Can Help Me

- Statistical Support
- Grant writing & revisions
- Senior mentorship
- Qualitative and mixed methods research
- Lab space

Recent Pubs

Bahorski, J. S., Mumbower, R., & Pocchio, K. E. (2020, online). Describing maternal knowledge of infant feeding practices. *Journal of Pediatric Health Care*. <https://doi.org/10.1016/j.pedhc.2020.11.001>

Schneider-Worthington, C. R., **Bahorski, J. S.,** Fields, D. A., Gower, B. A., Fernandez, J. R., & Chandler-Laney, P. C. (2020, online). Associations among maternal adiposity, insulin and adipokines in circulation and human milk. *Journal of Human Lactation*. <https://doi.org/10.1177/0890334420962711>

Bahorski, J. S., Schneider-Worthington, C. R., Chandler-Laney, P. C. (2020). Modified eating in the absence of hunger test is associated with appetitive traits in infants. *Eating Behavior*, 36. <https://doi.org/10.1016/j.eatbeh.2019.101342>

Bahorski, J. S., Childs, G. D., Loan, L. A., Azuero, A., Chandler-Laney, P. C., Rice, M., Hodges, E. A., Thompson, A. L., Wasser, H. M., & Bentley, M. E. (2020). Parental self-efficacy in new mothers predicts infant growth. *Western Journal of Nursing Research*, 42, 254 – 261. <http://doi.org/10.1177/0193945919854464>

All Research Profiles Available at:

research.fsu.edu/CollaborativeCollision

Up Next: John Sobanjo



John Sobanjo

Dept. of Civil & Env. Engineering/ASAP Center

sobanjo@eng.famu.fsu.edu

ORCID: orcid.org/0000-0001-9892-8840

My Interest in Resilience

- Modeling resilience with focus on natural hazards such as hurricanes, flooding, and wildfires
- The resilience of highway pavements and bridges to natural hazards
- The network resilience of transportation infrastructure systems to disruptions from natural hazards
- Community resilience associated with hazards occurrence on the transportation infrastructure systems



Research and Projects

- Resilience of major Florida roadways to hurricanes based on traffic incident data
- Community resilience of the transportation system for older populations exposed to wildfire hazards



- Resilience of regional transportation networks subjected to hazard-induced bridge damages
- Senior community resilience with a focus on critical transportation infrastructures

Expertise/Interests

- Infrastructure engineering and management
- Transportation resilience and sustainability
- Transportation accessibility and safety for the older population
- Application of advanced and emerging technologies

Civil Infrastructure Systems Laboratory



How I Can Help You

- Develop mathematical models of infrastructure deterioration and competing risks
- Develop transportation network traffic simulation models for disruptions
- Model the recovery times for the transportation infrastructure systems

How You Can Help Me

- Access to hazard data on infrastructure damage and recovery times
- Advanced models for predicting natural hazard occurrence at transportation infrastructure locations
- Collaboration on multi-disciplinary teams for research proposals



All Research Profiles Available at:

research.fsu.edu/CollaborativeCollision

Up Next: Jonathan Adams



Jonathan Adams, PMP
WJB 2021
jladams@fsu.edu

My Interest in Resilience

Interdisciplinary AI computer vision.

We have developed techniques to produce synthetic visual data. We train and enhance AI computer vision systems in any context with superior performance.

Why is this important?

Circumvent privacy issues
Reliable (no human error)

Less risk (our system works)
No data management

Why Collaborative Collision?

We seek to join grant teams, to expand our knowledge and capabilities.

Research and Projects

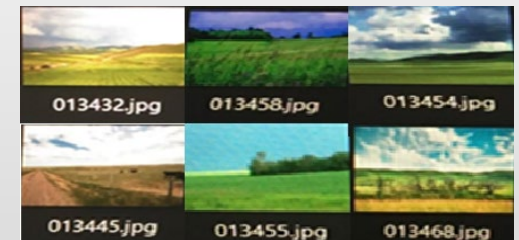
Evaluating The Performance Of Synthetic Visual Data For Real-Time Object Detection. (Synthetic turtles)



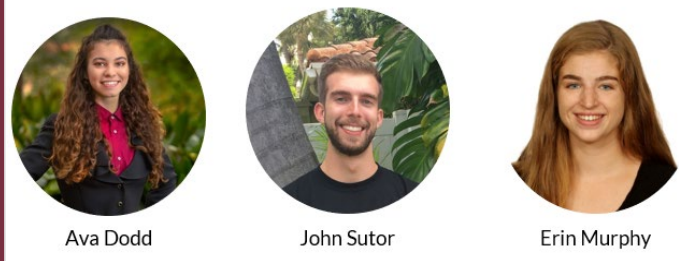
Assessing the Quality and Production of Synthetic Visual Data. IEEE



Generating truth-background synthetic imagery



Expertise/Interests AI Vision team



Ava Dodd

John Sutor

Erin Murphy

How I Can Help You

- Evaluate vision problems
- Produce synthetic imagery
- Produce media (boxed and labeled)
- Train, tune and refine object detection model

How You Can Help Me

- Bring AI vision questions, consult vision team
- Provide information on the nature of the visuals
- Collaborate on C&G efforts
- Let us help!

Ava Dodd Computational Science
John Sutor Computational Science
Erin Murphy Computer Engineering

All Research Profiles Available at:

research.fsu.edu/CollaborativeCollision

Up Next: Tom Ledermann





Tom Ledermann

Human Development and Family Science

tledermann@fsu.edu

<https://orcid.org/0000-0002-4976-6942>

My Interest in Resilience

- Mindfulness and compassion as resilience factors.
- Moderating effects of resilience.
- Resilience and its effect on people's well-being.
- Resilience in close relationships.
- Resilience over the life course.

Research and Projects

- Evaluation of the Compassion for Couples Training.
- Development and evaluation of a genuine happiness training.
- Validation of the Relational Cultural Intelligence.
- Mentoring the development and validation of an Affirmative Consent Training.
- Running of Power Simulations for longitudinal models.

Expertise/Interests

- Dyadic Data Analysis
- Mediation and Moderation Analysis
- Longitudinal Data Analysis
- Relationship Functioning
- Mindfulness and Compassion

How I Can Help You

- Data Analysis
 - Structural Equation Modeling
 - Multilevel Modeling
 - Survival Analysis
- Scale Development
- Serving as biostatistician on grant applications

How You Can Help Me

- Couple data for retest reliability analysis
- Newlywed datasets
- Collection of family data on shared time



Juan Ordonez

Energy and Sustainability Center
Center for Advanced Power Systems
jordonez@fsu.edu

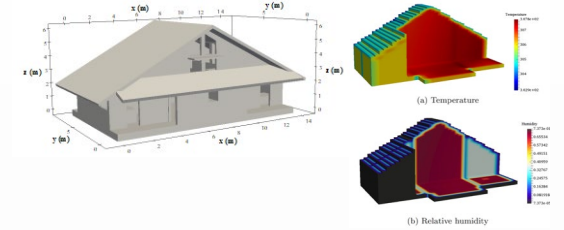
My Interest in Resilience

My research lies within the fields of heat transfer and thermodynamics and their application to the design, modeling and optimization of advanced energy systems.

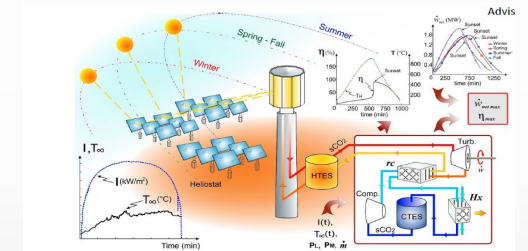
- Building Envelope and Sustainable Energy Systems Research.
- Building energy strategies to support resiliency to extreme weather events.
- Thermal energy storage.
- Deployable energy systems.
- Fuel cells, H₂ generation, solar thermal, solar PV.

Research and Projects

Building Thermal Modeling

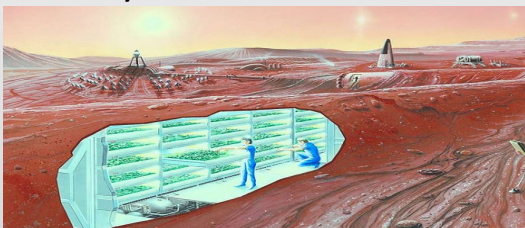


Concentrated solar power



Expertise/Interests

- Renewable Energy
- Thermal Systems
- Heat Transfer
- Thermodynamics

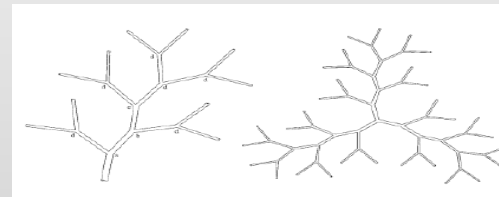


How I Can Help You

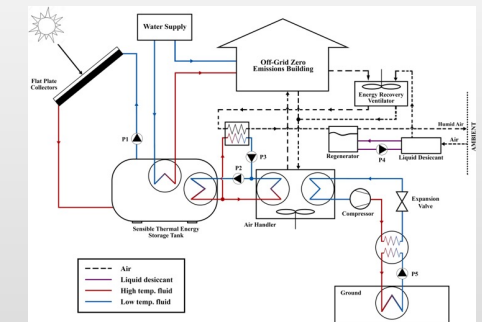
- Designing strategies for resilient energy systems.
- Developing thermal and energy models to quantify resiliency of the built environment.

How You Can Help Me

- Identifying collaborative efforts that require addressing energy systems to improve resiliency.



Energy Systems optimization





Bret Staudt Willet

Instructional Systems & Learning Technologies

bret.staudtwillet@fsu.edu

<http://bretsw.com/>

My Interest in Resilience

- I have been interviewing new teachers about their transitions from preparation programs into professional practice, and I have been struck by the agency required to navigate the many challenges inherent to making a career change, and the identity development that follows. This identity-agency reminds me of resilience.
- I have also been studying how participation patterns on social media (e.g., Twitter, Reddit) have changed during the COVID-19 pandemic, especially among educators. The ways educators have turned to social media in response to a sustained global crisis also feels like a practice of resilience.

Research and Projects

I am an Assistant Professor in the College of Education currently researching:

- **1. How are educators using social media in response to career transitions and external crises?** I have been studying Twitter and Reddit, specifically.
- **2. Is social media use by teachers informal learning or invisible labor?** I am studying how teachers use social media to direct their own professional learning. The literature largely characterizes this practice positively, and I am looking at the drawbacks in addition to the possibilities.
- **3. Data science in education.** I am studying how to train educators in learning data science as well as identity development.

Expertise/Interests

- Networked learning
- Online communities
- Social media
- Career transitions
- Teacher identity-agency
- Ethical considerations around using technology in education
- Open scholarship

How I Can Help You

- I have extensive experience in R programming
- I am skilled in a variety of methodologies, from interviews to data mining and social network analysis
- I have an extensive network of contacts in the tech industry.

How You Can Help Me

- I am new to FSU and looking for collaborators.
- I could use help scraping data from school websites across Florida
- I would benefit from working with someone experienced in writing grants.



Nasrin Alamdari

Civil & Environmental Engineering
RIDER Center

nalamdari@eng.famu.fsu.edu

www.nasrinalamdari.com

My Interest in Resilience

- Using numerical models to support decisions on mitigation of climate change
- Developing decision support tools to mitigate the effects of climate change
- Understanding the long-term effects of climate change on ecosystem, communities and infrastructure.
- Helping our communities to understand the impact of our today's decisions on mitigation these hazards on ecosystems

Research and Projects

I am interested in interdisciplinary research that uses best available technology to support decisions related to the impact of natural hazards on our communities, infrastructure and ecosystem.



I perform advanced numerical analyzes to develop simulation-optimization frameworks that support decision making.

Expertise/Interests

- Climate and land use change impacts
- Natural and nature-based features
- Urban stormwater management/green infrastructure
- Surface-groundwater interaction

How I Can Help You

- Developing predictive frameworks to quantify harmful algal blooms and at-risk ecosystems
- Developing planning tools to mitigate water pollution
- Quantifying the effects of climate change and sea level rise on coastal flooding and pollution

How You Can Help Me

- Effective methods for communication of complex analyzes with the public stakeholders
- Field work, data collection and lab analysis related to my research
- Developing research projects related to social and economic benefits of green infrastructure

Recent Projects:

- Development of statewide decision support tool to control nutrients in urban communities
- Development of Non-Point Source Pollution and Green Infrastructure Education Curriculum for High School Teachers and Students across Florida
- The role of natural and nature-based feature in mitigating the long- term effects of sea level rise
- Prediction and Mitigation of Harmful Algal Blooms in Biscayne Bay using Advanced Numerical Methods



Julia Sheffler

Assistant Professor

Center for Translational Behavioral Science

Julia.sheffler@med.fsu.edu

My Interest in Resilience

- Understanding how lifespan models of stress and resiliency can contribute to the development of late-life interventions.
- Examining bio-psycho-social pathways from adverse childhood experiences to late-life health.
- Developing behavioral interventions and prevention programs for late-life health problems and neurodegenerative disorders.
- Applying psychological/behavioral strategies to enhance adherence to lifestyle interventions for older adults.

Research and Projects

- Current projects in our program span the translational spectrum, from basic social science approaches led by undergraduate researchers examining how childhood adversity influences health and emotion regulation across the lifespan, to clinical trials examining a nutrition adherence intervention for older adults at-risk for Alzheimer’s disease.
- Current Pilot Trial
 - Using motivational interviewing and cognitive behavioral strategies to promote motivation and adherence to Mediterranean ketogenic nutrition in older adults at risk for Alzheimer’s disease.
- Secondary Data Analysis
 - Examining long-term impacts of adverse childhood experiences and adult stress on health
 - Using EEG to identify neural correlates of cognitive and emotional functioning in older adults

Expertise/Interests

- Geropsychology
- Late-life health and cognitive functioning
- Lifespan stress and biopsychosocial pathways
- Lifestyle interventions for late-life health

How I Can Help You

- Licensed clinical psychologist with expertise in cognitive assessment
- Psychological interventions/strategies in novel applications
- Lifespan models of stress and resiliency

How You Can Help Me

- Interdisciplinary collaboration on grants
- Collecting and analyzing biological samples
- Contribute expertise on existing interventions that could be adapted for older adults



Mimi Graham

FSU Center for Prevention & Early Intervention
Policy
mgraham@fsu.edu

My Interest in Resilience

- Created website: fltrauma.org and hosted Dr. Felliti, founder of ACES study, event to create Trauma Informed State across systems. Created Showcase of Florida’s Cutting Edge Trauma Initiatives:
https://cpeip.fsu.edu/Creating_a_Trauma_Informe_State/TraumaShowcase.pdf
- Would love to bring together our talent in ACES, trauma and resilience at FSU for more collective impact such as a multidisciplinary trauma center. Our center brings expertise in early childhood through workforce development, advocacy, model programs, and product development.

Research and Projects

- **Model Programs:** We translate research into practice with several innovative programs: The Young Parents Project addresses pregnant or parenting trafficked teens in Miami and Tallahassee. Florida’s Early Childhood Courts Project brings a therapeutic approach to breaking the multigenerational child abuse.
- **Professional Development:** we offer range including graduate and post graduate CEU classes & trainings including : Foundations of Infant Mental Health which is based on the science of ACES, resiliency,& attachment.
- **Products:** Applies key resilience qualities into practical application: *Finding the Gold Within: Overcoming Adversity to Create a Happy Life*, utilized by community programs to strengthen resiliency.

Expertise/Interests

- Professional development & training in trauma across systems including child welfare, schools, health care and courts.
- Policy, advocacy and model program development in applying trauma education & interventions across systems

How I Can Help You

- Provide trauma training across systems
- Linkage with statewide leaders in trauma and resiliency research, policy and programs across systems

How You Can Help Me

- Research expertise in analyzing model program data and interventions



OFFICE OF RESEARCH DEVELOPMENT



Beth Hodges
Director



Rachel
Goff-Albritton
Assistant Director



Grace Adkison
Program Manager
FSU Council on Research
and Creativity



Mike Mitchell
Strategic Initiatives
Manager



Evangeline Ciupek
Professional Development
and Resource Specialist



Carolyn Bradley
Proposal Development and
Funding Specialist



Laurie O'Brien
Program Assistant: Council
on Research and Creativity

Contact us!

Website: ORD.FSU.EDU

Email: ORD@FSU.EDU

Our mission is to

STRENGTHEN RESEARCH COMPETITIVENESS.

We are devoted to equipping researchers for success, building connections, investing in promising new ideas and research, and promoting a culture which helps research to flourish.

Resources and Services

- Proposal development and editing
- Mock review panels
- Finding funding
- Successful proposal examples
- Professional development training
- Limited Submissions
- Internal Funding Programs



COLLABORATIVE INCUBATOR



Registration
Now Open

Project Development

September 23rd | 3-5pm

Session Outcome(s): Outlined pilot project, catalog of available assets, and several potential alternative projects.

Collaboration Basic Training

October 7th | 3-5pm

Session Outcome(s): Draft collaboration plan, and library of team science resources.

Competitive Advantage

October 21st | TBD

Session Outcome(s): Report on possible funding opportunities, sponsors, and competitors.

Strategic Positioning

November 4th | TBD

Session Outcome(s): Strategic messaging plan, and Collaborative Accelerator pitch videos (produced with ORD).

Breakout Room Hosts

Dr. Norman Anderson

Assistant Vice President for Research and Academic Affairs

Dr. Joe Frascella

Chief Clinical Research Officer

Dr. Tim Chapin

Dean, College of Social Sciences and Public Policy

Jimmy Cole

Co-Chair Resilience Working Group, University Relations

Dr. Jeffrey Joyce

Senior Associate Dean, College of Medicine

Dr. Mark Riley

Dean, The Graduate School

Breakout Room Co-Hosts

Dr. Rachel Goff-Albritton

Assistant Director, Office of Research Development

Beth Hodges

Director, Office of Research Development

Laura Kitchens

Grants Compliance Analyst, College of Social Sciences and Public Policy

Will Hill

Strategic Initiatives Manager, RIDER Center

Dr. Carolyn Bradley

Proposal Development Specialist, Office of Research Development

Advertising Assistance

Kelly Starke

Special Assistant to the Vice President for Research

Annie Grier

Senior Coordinator for EDI, Human Resources-Office of Equity, Diversity, and Inclusion

Council of Associate Deans for Research

Deans, Directors, and Department Chairs

Research Development Partners Working Group

Development Consultants

Grace Adkison

Program Manager, Council on Research and Creativity

Dr. Robert Reiser

Associate Dean for Research, College of Education

Dr. Lara Perez-Felkner

Associate Professor, College of Education

Dr. Kassie Ernst

RIDER Center, FAMU-FSU College of Engineering

Web Support

Matt Kirschner

National High Magnetic Field Laboratory

Speaking Arrangements

Dr. Bill Riley

National Institutes of Health

Office of the President, Florida State University

University Communications, Florida State University

Host/Executive Producer

Mike Mitchell

Strategic Initiatives Manager, Office of Research Development

Production Manager

Evangeline Coker

Professional Development and Resource Specialist, Office of Research Development

Special Thanks

Dr. Richard McCullough

President

Florida State University

Dr. Laurel Fulkerson

Interim Vice President for Research

Florida State University

Dr. Bill Elwood

Office of Behavioral and Social Sciences Research

National Institutes of Health



COLLABORATIVE COLLISION @FSU



Annie Grier, MSW
 Equity, Diversity & Inclusion Office
agrier@fsu.edu
amaa2@fsu.edu

Expertise/Interests

- Increase diversity of FSU student body, faculty and staff
- Increase global and cultural competencies in the FSU community
- Increase recruitment, retention

Research and Projects

The President's Council on Diversity & Inclusion is a standing body of faculty, staff and students throughout the university that work to ensure that FSU creates and maintains a *diverse, inclusive, and equitable* campus for all faculty, staff, students and the communities in which we live and learn.

The Council is committed to supporting, celebrating and amplifying research and activities related to this campus vision. The Council's goals of university Strategic Plan include:

- Promote Diversity, Equity, and Inclusion webinars
- Assessment of university Office of Academic & Administrative Affairs
- EDI Strategic Plan

How I Can Actively Lead in the following areas:

- Assessment
- Community
- Hispanic/Spanish
- Speakers